

Register your product and get support at
www.philips.com/welcome

EN User manual

PHILIPS

Contents

1	Important	4
	Safety	4
	Notice	5

2	Your Entertainment System	8
	Introduction	8
	What's in the box	8
	What else you need	8
	Overview of the main speaker	9
	Overview of the remote control	10

3	Prepare	11
	Connect	11
	Prepare the remote control	11

4	Connect to your home Wi-Fi network for AirPlay	13
	Scenario 1: Connect to a WPS router	13
	Scenario 2: Connect to a non-WPS router	14

5	Play	22
	Stream audio from your iTunes music library to DS6800W	22
	Control play	23
	Use advanced sound settings	23
	Play/charge your iPod/iPhone/iPad through USB socket	24
	Play from an external device	24

6	Update firmware	26
	Download the update file	26
	Update from the configuration page	26

7	Product information	28
	Specifications	28

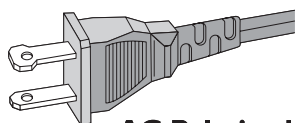
8	Troubleshooting	29
----------	------------------------	-----------

1 Important

Safety

Important Safety Instructions

- ① Read these instructions.
- ② Keep these instructions.
- ③ Heed all warnings.
- ④ Follow all instructions.
- ⑤ Do not use this apparatus near water.
- ⑥ Clean only with dry cloth.
- ⑦ Do not block any ventilation openings. Install in accordance with the manufacturer's instructions.
- ⑧ Do not install near any heat sources such as radiators, heat registers, stoves, or other apparatus (including amplifiers) that produce heat.
- ⑨ Do not defeat the safety purpose of the polarized or grounding-type plug. A polarized plug has two blades with one wider than the other. A grounding type plug has two blades and a third grounding prong. The wide blade or the third prong are provided for your safety. If the provided plug does not fit into your outlet, consult an electrician for replacement of the obsolete outlet.
- ⑩ Protect the power cord from being walked on or pinched, particularly at plugs, convenience receptacles, and the point where they exit from the apparatus.



AC Polarized Plug

- ⑪ Only use attachments/accessories specified by the manufacturer.
- ⑫ Use only with the cart, stand, tripod, bracket, or table specified by the manufacturer or sold with the apparatus. When a cart is used, use caution when moving the cart/apparatus combination to avoid injury from tip-over.



- ⑬ Unplug this apparatus during lightning storms or when unused for long periods of time.
- ⑭ Refer all servicing to qualified service personnel. Servicing is required when the apparatus has been damaged in any way, such as power-supply cord or plug is damaged, liquid has been spilled or objects have fallen into the apparatus, the apparatus has been exposed to rain or moisture, does not operate normally, or has been dropped.
- ⑮ Battery usage **CAUTION** – To prevent battery leakage which may result in bodily injury, property damage, or damage to the unit:
 - Install all batteries correctly, + and - as marked on the unit.
 - Remove batteries when the unit is not used for a long time.
 - Perchlorate Material-special handling may apply. See www.dtsc.ca.gov/hazardouswaste/perchlorate.
- ⑯ Apparatus shall not be exposed to dripping or splashing, keep it away from direct sunlight, naked flames or heat.

Warning

- Never remove the casing of this apparatus.
- Never lubricate any part of this apparatus.
- Never place this apparatus on other electrical equipment.
- Keep this apparatus away from direct sunlight, naked flames or heat.
- Ensure that you always have easy access to the power cord, plug or adaptor to disconnect this apparatus from the power.

Risk of overheating! Never install this apparatus in a confined space. Always leave a space of at least four inches around this apparatus for ventilation. Ensure curtains or other objects never cover the ventilation slots on this apparatus.

Notice

Notice of compliance

Modifications

The user is cautioned that changes or modifications not expressly approved by the party responsible for compliance could void the user's authority to operate the equipment.

FCC & RSS compliance statement

This device complies with Part 15 of the FCC Rules and Industry Canada licence-exempt RSS standard(s). Operation is subject to the following two conditions:

- ① This device may not cause harmful interference, and
- ② This device must accept any interference received, including interference that may cause undesired operation.

FCC Radiation Exposure Statement

This equipment complies with FCC's and IC's RF radiation exposure limits set forth for an uncontrolled environment. The antenna(s) used for this transmitter must be installed and operated to provide a

separation distance of at least 20 cm from all persons and must not be collocated or operating in conjunction with any other antenna or transmitter. Installers must ensure that 20cm separation distance will be maintained between the device (excluding its handset) and users.

FCC rules

This equipment has been tested and found to comply with the limits for a Class B digital device, pursuant to Part 15 of the FCC Rules. These limits are designed to provide reasonable protection against harmful interference in a residential installation. This equipment generates, uses and can radiate radio frequency energy and, if not installed and used in accordance with the instructions, may cause harmful interference to radio communications. However, there is no guarantee that interference will not occur in a particular installation.

If this equipment does cause harmful interference to radio or television reception, which can be determined by turning the equipment off and on, the user is encouraged to try to correct the interference by one or more of the following measures:

- Reorient or relocate the receiving antenna.
- Increase the separation between the equipment and receiver.
- Connect the equipment into an outlet on a circuit different from that to which the receiver is connected.
- Consult the dealer or an experienced radio/TV technician for help.

Canada:

This Class B digital apparatus complies with Canadian ICES-003.

Disposal of your old product and batteries

Your product is designed and manufactured with high quality materials and components, which can be recycled and reused. Never dispose of your product with other household waste. Please inform yourself about the local rules on the separate collection of electrical and electronic products and batteries. The correct disposal of these products helps prevent potentially negative consequences on the environment and human health. Your product contains batteries, which cannot be disposed of with normal household waste. Please inform yourself about the local rules on separate collection of batteries. The correct disposal of batteries helps prevent potentially negative consequences on the environment and human health. Please visit www.recycle.philips.com for additional information on a recycling center in your area.

Modifications

Modifications not authorized by the manufacturer may void user's authority to operate this product.

Information about the use of batteries:

! Caution

- Risk of leakage: Only use the specified type of batteries. Do not mix new and used batteries. Do not mix different brands of batteries. Observe correct polarity. Remove batteries from products that are not in use for a longer period of time. Store batteries in a dry place.
- Risk of injury: Wear gloves when handling leaking batteries. Keep batteries out of reach of children and pets.
- Risk of explosion: Do not short circuit batteries. Do not expose batteries to excessive heat. Do not throw batteries into the fire. Do not damage or disassemble batteries. Do not recharge non-rechargeable batteries.

Environmental information

All unnecessary packaging has been omitted. We have tried to make the packaging easy to

separate into three materials: cardboard (box), polystyrene foam (buffer) and polyethylene (bags, protective foam sheet.) Your system consists of materials which can be recycled and reused if disassembled by a specialized company. Please observe the local regulations regarding the disposal of packaging materials, exhausted batteries and old equipment.



"Made for iPod," "Made for iPhone," and "Made for iPad" mean that an electronic accessory has been designed to connect specifically to iPod, iPhone, or iPad, respectively, and has been certified by the developer to meet Apple performance standards. Apple is not responsible for the operation of this device or its compliance with safety and regulatory standards. Please note that the use of this accessory with iPod, iPhone, or iPad may affect wireless performance. AirPlay, iPod, and iPhone are trademarks of Apple Inc., registered in the U.S. and other countries. iPad is a trademark of Apple Inc.

Class II equipment symbol:



CLASS II apparatus with double insulation, and no protective earth provided.

≡ Note

- The type plate is located on the bottom of the apparatus.

2 Your Entertainment System

Congratulations on your purchase, and welcome to Philips! To fully benefit from the support that Philips offers, register your product at www.philips.com/welcome.

If you contact Philips, you will be asked for the model and serial number of this apparatus. The model number and serial number are on the bottom of the apparatus. Write the numbers here:

Model No. _____

Serial No. _____

Introduction

Apple AirPlay technology enables you to play your iTunes music library, hosted on a Mac, PC, iPhone, iPod touch, or iPad on any AirPlay-enabled device (for example, your DS6800W) connected to the Wi-Fi network.

With an AirPlay-enabled device (for example, your DS6800W), you can:

- stream audio from your iTunes music library to any room in your house
- choose which AirPlay-enabled devices you want to play music on (if you have more than one such devices in your house)
- stream audio to multiple AirPlay-enabled devices at the same time (from the iTunes music library on your PC/Mac only)



Tip

- Please visit www.philips.com/welcome for information about more Philips AirPlay-enabled devices.

With DS6800W, you can also:

- charge your iPod/iPhone/iPad through the USB socket with an Apple USB cable (not supplied).
- play your iTunes music library on your iPod/iPhone/iPad through the USB socket directly while charging.
- play music from other audio devices through the **MP3-LINK** socket.

What's in the box

Check and identify the contents of your package:

- Main unit (with a built-in Wi-Fi module)
- 1 x AC power adaptor
- 1 x MP3 link cable
- 1 x DIN cable for speaker connection
- User manual (in CD-ROM)
- Quick start guide

What else you need

To stream audio wirelessly by AirPlay, you need:

- A Wi-Fi certified router
- A host for your iTunes music library, for example, an iPod touch/iPhone/iPad installed with iOS 4.3 (or later) or a Wi-Fi enabled PC/Mac installed with iTunes 10 (or later)

Your DS6800W should be connected to the same local network as your iTunes host device through the Wi-Fi router.

List of compatible iTunes host devices for AirPlay

In terms of AirPlay, DS6800W is compatible with:

- a Wi-Fi enabled PC/Mac installed with iTunes 10 (or later); and
- the following iPod/iPhone/iPad models installed with iOS 4.3 (or later):

- iPad 2
- iPad
- iPhone 4
- iPhone 3GS
- iPod touch (2nd, 3rd, and 4th generation)

- Detect signals from the remote control. Point the remote control directly at the sensor.

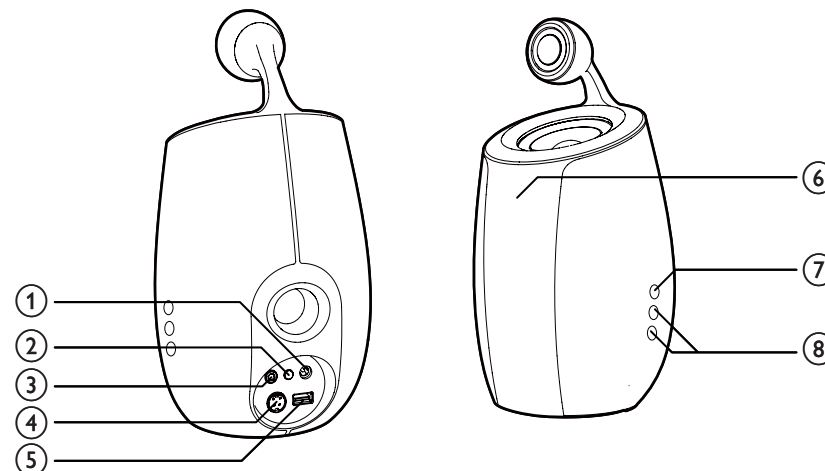
⑦

- Turn the unit on/off.

⑧ +/-

- Adjust volume.
- (Press and hold both buttons) reset DS6800W.

Overview of the main speaker



① DC-IN

- Connect the power adaptor.

② WI-FI SETUP button/indicator

- Connect the unit to a Wi-Fi network.
- Show the Wi-Fi connection status of the unit.

③ MP3-LINK

- Connect an external audio player through the supplied MP3 link cable.

④ CABLE IN

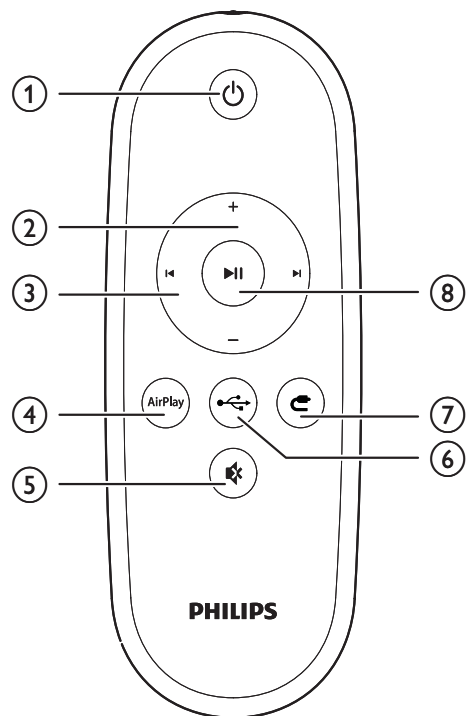
- Connect the two speakers through the supplied speaker cable.

⑤ USB

- Connect an iPod/iPhone/iPad through an Apple USB cable (not supplied).

⑥ IR sensor

Overview of the remote control



- ①
 - Turn on/off the unit.
- ②
 - Adjust volume.
- ③
 - Skip to the previous/next track.
- ④ **AirPlay**
 - Select the AirPlay audio source.
- ⑤
 - Mute or restore volume.
- ⑥
 - Select the USB audio source (for iPod/iPhone/iPad only).
- ⑦
 - Select the MP3 link audio source.

- ⑧
 - Start or pause play.

3 Prepare

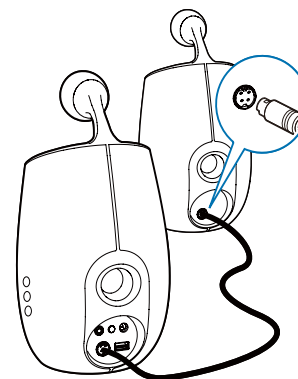
Always follow the instructions in this chapter in sequence.

Connect

Connect speaker cables

Note

- For optimal sound, use the supplied speakers only.
- The supplied DIN cable is only intended for use with DS6800W. Never try to connect any other devices through this cable.

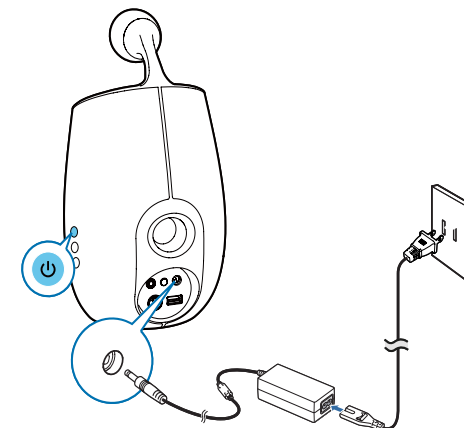


- Connect the supplied DIN cable to the **CABLE IN** sockets on both speakers.

Connect power

Caution

- Risk of product damage! Make sure that the power supply voltage matches the voltage printed on the bottom of the unit.
- Risk of electric shock! When you unplug the AC adaptor, always pull the plug from the socket. Never pull the cord.
- Before you connect the AC adaptor, make sure that you have completed all the other connections.



- Connect the AC power cord to
 - the **DC-IN** socket on the back of the main speaker.
 - the wall power socket.

Turn DS6800W on

After proper power connection, the unit switches on automatically.

- Wait for successful boot-up of the unit.
 - ↳ The boot-up takes about 35 seconds.
 - ↳ During boot-up, the **Wi-Fi SETUP** indicator on the back of the main speaker blinks green quickly.
 - ↳ After boot-up, if no Wi-Fi connection has been set up for DS6800W, the **Wi-Fi SETUP** indicator starts to blink green slowly.
- To switch the unit to standby mode, press .
- To switch the unit on from standby mode, press again.

Prepare the remote control

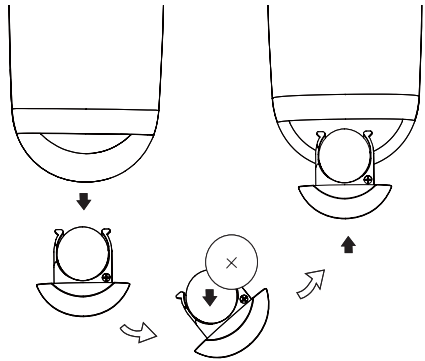
Caution

- Risk of explosion! Keep batteries away from heat, sunshine or fire. Never discard batteries in fire.

For first-time use:

- 1 Remove the protective tab to activate the remote control battery.

To replace the remote control battery:

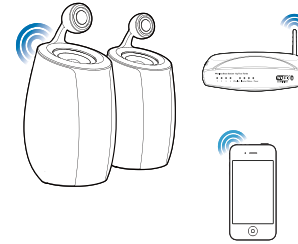


- 1 Open the battery compartment.
- 2 Insert one CR2032 battery with correct polarity (+/-) as indicated.
- 3 Close the battery compartment.

Note

- Before you press any function button on the remote control, first select the correct source with the remote control instead of the main unit.
- If you are not going to use the remote control for a long time, remove the battery.
- Point the remote control directly at the IR sensor on the front of the main speaker for better reception.

4 Connect to your home Wi-Fi network for AirPlay



To connect DS6800W to your existing home Wi-Fi network, you need to apply your home Wi-Fi setting to DS6800W.

You can do this in two ways (depending on which type of Wi-Fi router you use):

- Automatically - if your Wi-Fi router is WPS (Wi-Fi Protected Setup)-enabled and supports PBC (Push Button Connection) (see 'Scenario 1: Connect to a WPS router' on page 13)
- Manually - if your Wi-Fi router does not support WPS (see 'Scenario 2: Connect to a non-WPS router' on page 14)

Once connected successfully, DS6800W will remember your home Wi-Fi settings. Then you can enjoy AirPlay whenever DS6800W is powered on and connected to your home Wi-Fi network automatically.

Before connection of DS6800W to your home Wi-Fi network, check the points below.

- 1 Make sure that your Wi-Fi router is powered on and working properly.

- 2 Make sure that DS6800W has been powered on and booted up successfully (see 'Turn DS6800W on' on page 11).
- 3 Identify the type of your Wi-Fi router (see the user manual of your Wi-Fi router for details).

Scenario 1: Connect to a WPS router

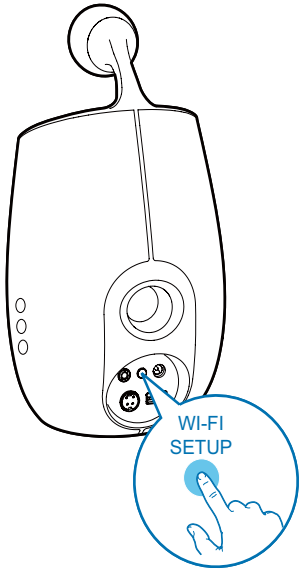
Note

- Before you press any button on DS6800W, make sure that DS6800W has been booted up successfully (see 'Turn DS6800W on' on page 11).

- 1 Press the WPS button on your home Wi-Fi router.



- 2 Shortly after step 1, press **Wi-Fi SETUP** on the back of the main speaker:
 - ↳ The **Wi-Fi SETUP** indicator blinks red, yellow and green alternately.
 - ↳ Within 2 minutes, the **Wi-Fi SETUP** indicator stops blinking and stays green, and the unit beeps.
 - ↳ DS6800W is connected to your home Wi-Fi network successfully.



Tip

- For some Wi-Fi routers, you may need to hold the WPS button for Wi-Fi connection or enable the WPS PBC function from the router configuration pages. See the user manuals of the specific routers for details.
- If the **Wi-Fi SETUP** indicator on DS6800W blinks yellow, it means that the Wi-Fi connection has failed. Please wait for 2 minutes and try again. If the problem remains, try to set up the Wi-Fi connection manually (see 'Scenario 2: Connect to a non-WPS router' on page 14).
- If the Wi-Fi connection fails again, press and hold both the **+** and **-** buttons on the main speaker to reset it, and then try again.

To connect DS6800W to a Wi-Fi router manually, you need access to DS6800W's built-in configuration web page for change of its internal Wi-Fi settings. To do so, you need a Wi-Fi enabled device with an Internet browser for temporary Wi-Fi connection to DS6800W. The Wi-Fi enabled device can be an iPod touch/ iPhone/iPad or a Wi-Fi enabled PC/Mac. Follow the sequence below for connection of DS6800W to a non-WPS Wi-Fi router:

- 1 Collect settings of your home Wi-Fi router and write down on paper for use during DS6800W Wi-Fi setup (see 'Collect settings of your home Wi-Fi router' on page 15).
- 2 Switch DS6800W to Assisted Wi-Fi Setup mode (see 'Switch DS6800W to Assisted Wi-Fi Setup mode' on page 15).
 - ↳ A new Wi-Fi network created by DS6800W will appear, with the network name (SSID) of **Philips Fidelio AirPlay**.
- 3 Connect your Wi-Fi enabled device to the created new Wi-Fi network temporarily (see 'Connect your Wi-Fi enabled device to the newly created Wi-Fi network' on page 15).
- 4 Open the built-in web page of DS6800W with the Internet Browser of your Wi-Fi enabled device (see 'Open the built-in web page of DS6800W' on page 17).
- 5 Change the internal Wi-Fi settings of DS6800W based on the settings you wrote on paper at step 1 (see 'Change the internal Wi-Fi settings of DS6800W' on page 18).
- 6 Restore your Wi-Fi enabled device back to your existing home Wi-Fi settings (see 'Restore your Wi-Fi enabled device back to your existing home Wi-Fi setting' on page 20).

Scenario 2: Connect to a non-WPS router

Note

- You can also follow the procedures below to connect DS6800W to a WPS router manually.

Collect settings of your home Wi-Fi router

Note

- Always consult the user manual of your home Wi-Fi router for detailed instructions.

- 1 Connect your Wi-Fi enabled device to your existing home Wi-Fi network.
- 2 Launch the Internet browser (for example, Apple Safari or Microsoft Internet Explorer) on your Wi-Fi enabled device.
- 3 Open the configuration page of your home Wi-Fi router.
- 4 Find the Wi-Fi settings tab and write down the following information on paper:
 - (A) Network name (SSID)
 - (B) Wi-Fi security mode (usually WEP, WPA or WPA2 if enabled)
 - (C) Wi-Fi password (if Wi-Fi security is enabled)
 - (D) DHCP mode (enabled or disabled)
 - (E) Static IP address settings (if DHCP mode is disabled)

Switch DS6800W to Assisted Wi-Fi Setup mode

- After successful boot-up, press and hold **Wi-Fi SETUP** on the back of the main speaker for more than 5 seconds.
 - ↳ The **Wi-Fi SETUP** indicator blinks green and yellow alternately.
 - ↳ A new Wi-Fi network of DS6800W itself is created, with the network name (SSID) of **Philips Fidelio AirPlay**.
 - ↳ It takes about 45 seconds for successful creation of this new Wi-Fi network.

Note

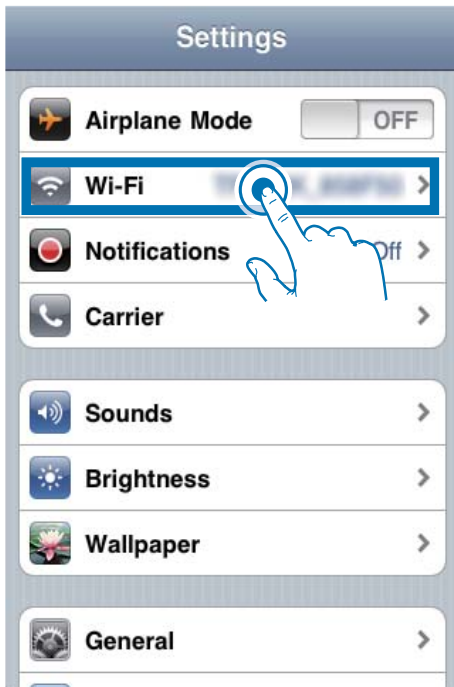
- After you finishes manual Wi-Fi setting for DS6800W, this new Wi-Fi network disappears.
- If you fail to enter Assisted Wi-Fi Setup mode, power off DS6800W and power on it again, then try again after successful boot-up.
- Make sure that there are no other Philips AirPlay-enabled devices in Assisted Wi-Fi Setup mode at the same time. Multiple new Wi-Fi networks created this way may interfere with each other.

Connect your Wi-Fi enabled device to the newly created Wi-Fi network

The new Wi-Fi network created by DS6800W only allows access of one Wi-Fi enabled device. To avoid interference from any other Wi-Fi devices, you are recommended to temporarily disable the Wi-Fi function on your other Wi-Fi devices.

Option 1: Use your iPod touch/iPhone/iPad

- 1 Select **Settings** -> **Wi-Fi** on your iPod touch/iPhone/iPad.



Tip

- If Philips Fidelio AirPlay is not in the list, try to scan the available Wi-Fi networks again.

Use your Wi-Fi enabled PC/Mac

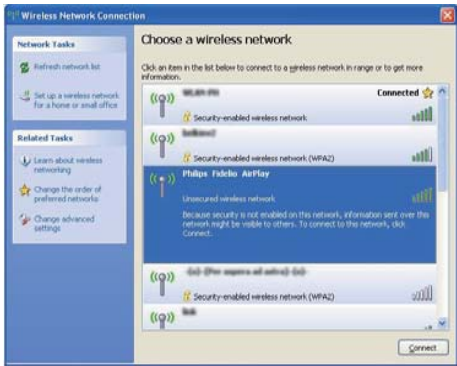
Note

- See the user manual of your PC/Mac for how to connect your PC/Mac to a Wi-Fi network.
- During Wi-Fi network connection, do not connect any network cable to your PC/Mac.

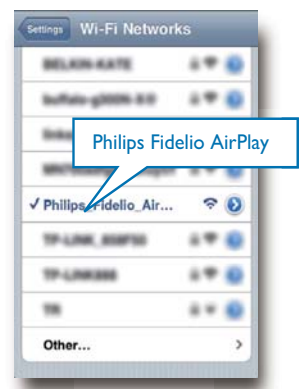
- 1 Open the Wi-Fi setup tool or control panel on your PC/Mac.
- 2 Scan the available Wi-Fi networks.



- 3 Select Philips Fidelio AirPlay from the list of available networks.

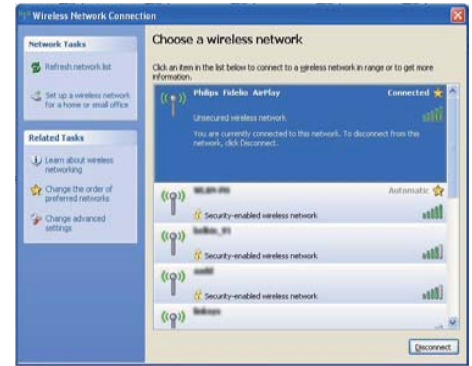


- 2 Select Philips Fidelio AirPlay from the list of available networks.



- 3 Wait until successful Wi-Fi connection on your iPod touch/iPhone/iPad.
 - ↳ Wi-Fi is displayed at the upper left corner of your iPod touch/iPhone/iPad.

- 4 Wait until successful Wi-Fi connection on your PC/Mac.

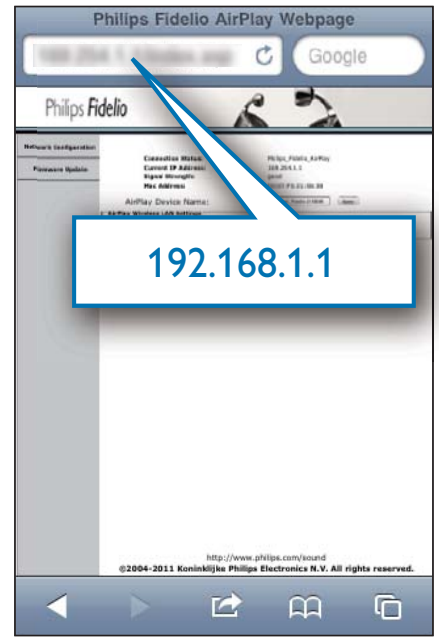


Tip

- If Philips Fidelio AirPlay is not in the list, try to scan the available Wi-Fi networks again.

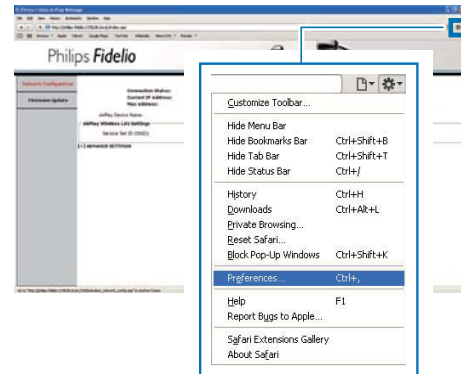
Open the built-in web page of DS6800W

- 1 Launch Apple Safari browser or any other Internet browser on your Wi-Fi enabled device.
- 2 Type in 192.168.1.1 at the browser address bar and confirm.
 - ↳ The DS6800W configuration web page is displayed.

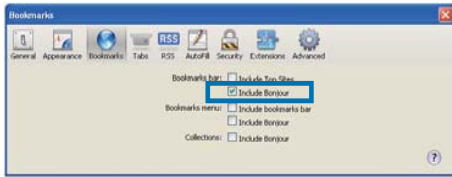


If you use Safari on your Wi-Fi enabled PC/Mac, you can also select 'Philips_Fidelio XXX' from the Bonjour pull-down list to enter the DS6800W configuration web page directly.

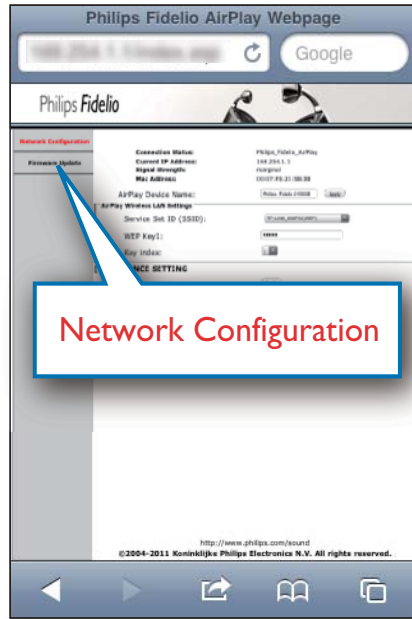
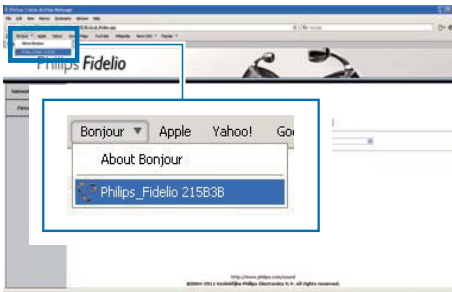
- 1 Click * -> Preferences.
 - ↳ The Bookmarks menu is displayed.



- 2 Tick Include Bonjour for Bookmarks bar.



- 3 Select 'Philips_Fidelio XXX' from the Bonjour pull-down list shown at the bookmarks bar.
 - ↳ The DS6800W configuration web page is displayed.



- 2 Select your network name (SSID) from the pull-down list of Service Set ID (SSID).



Change the internal Wi-Fi settings of DS6800W

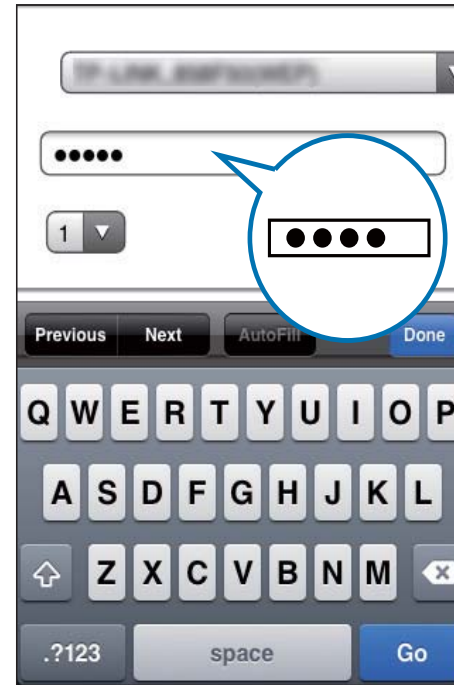
On the DS6800W configuration web page, you can change the internal Wi-Fi settings of DS6800W for connection of DS6800W to your existing home Wi-Fi network.

Note

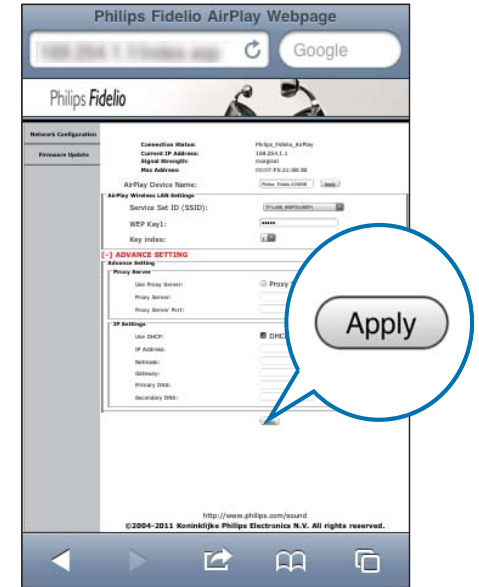
- Make sure that the settings at steps 2 to 4 below match your home Wi-Fi network settings you wrote on paper.

- 1 Select the **Network Configuration** tab.

- 3 Enter your network key if required.



- 4 If DHCP mode is disabled in your home Wi-Fi router, tick **DHCP** under **Advance Setting**.
- 5 Click **Apply** at the bottom of the page to apply your new settings.
 - ↳ A menu for confirmation of your change pops up.



- 6 Click **OK** on the popup menu to confirm your change.
 - ↳ After a while, the **WI-FI SETUP** indicator on the back of DS6800W stops blinking and stays green, and the unit beeps.
 - ↳ DS6800W is connected to your existing home Wi-Fi network successfully.



Note

- If the **WI-FI SETUP** indicator on DS6800W does not stay green steadily, it means that the Wi-Fi connection has failed. Please power off both your Wi-Fi router and DS6800W and then power on them again to see whether DS6800W can be connected to your home Wi-Fi network. If the problem remains, try the above procedures again.
- After you finish the above changes or power-off and power-on of DS6800W, the new Wi-Fi network created by DS6800W will disappear.

Tip

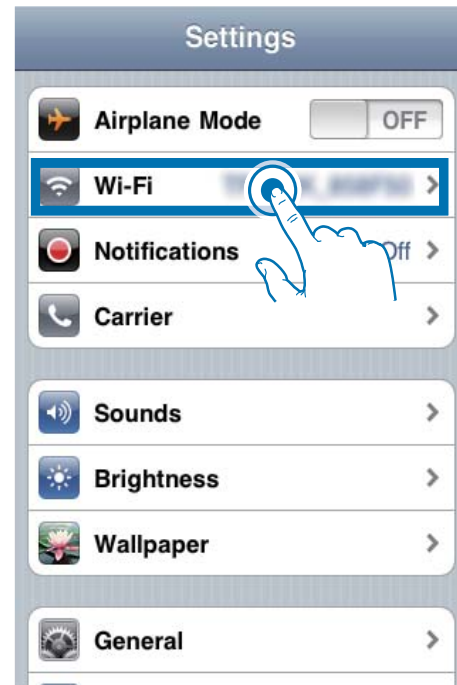
- If you like, you can change the name of your DS6800W in **AirPlay Device Name** on the DS6800W configuration web page. This is helpful when you have multiple Philips AirPlay-enabled devices in your house and you need to distinguish between them.
- If you want to enter the network name (SSID) manually (for example, if you want to hide your SSID), select **CONFIGURE MANUALLY** from the pull-down list at step 2 in the above.

Restore your Wi-Fi enabled device back to your existing home Wi-Fi setting

Note

- Make sure that the settings at steps 2 to 3 below match your home Wi-Fi network settings you wrote on paper.

- 1 Select **Settings** -> **Wi-Fi** on your iPod touch/iPhone/iPad.
 - Or open the list of available Wi-Fi networks on your PC/Mac.



- 2 Select your network name (SSID) from the list of available wireless networks.



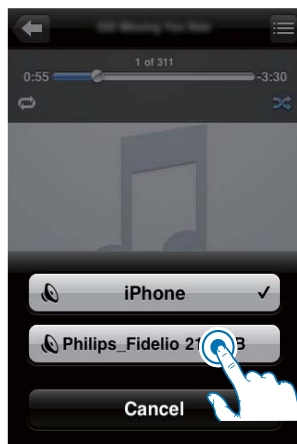
- 3 Enter the network key if required.
- 4 Wait until successful Wi-Fi connection to your home Wi-Fi network.

5 Play

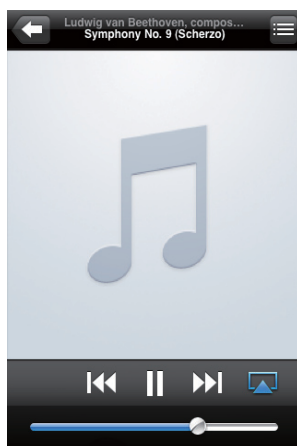
Stream audio from your iTunes music library to DS6800W

Note

- Make sure that your iTunes host device is connected to the same Wi-Fi network as DS6800W. Your iTunes device can be an iPod touch/iPhone/iPad installed with iOS 4.3 (or later) or a Wi-Fi enabled PC/Mac installed with iTunes 10 (or later).



- 4 Select a media file and start play.
↳ After a while, you will hear music from DS6800W.

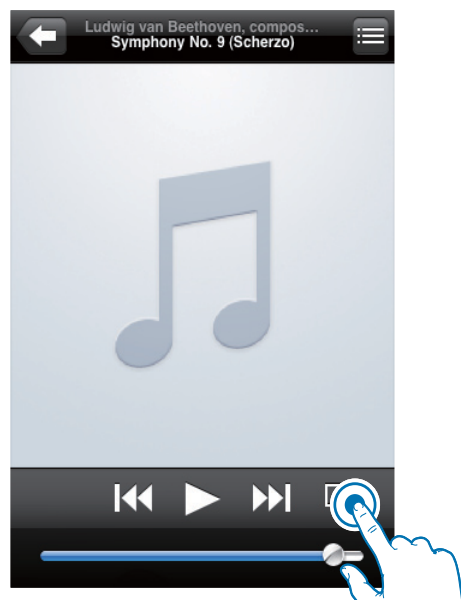


Note

- If you fail to hear music after successful setup, do one of the following on your iPod touch/iPhone/iPad:
 - (1) Disconnect and then re-connect to the same Wi-Fi router again;
 - (2) Close all applications running at the background;
 - (3) Power off and then power on your iPod touch/iPhone/iPad again.

Stream from your iPod touch/iPhone/iPad

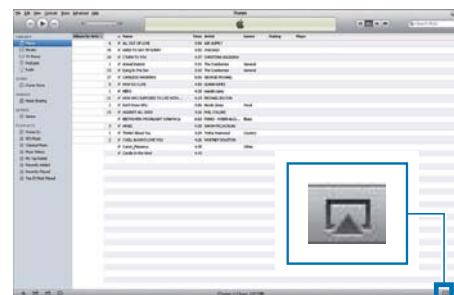
- 1 Launch the iPod application on your iPod touch/iPhone/iPad.
- 2 Tap on the AirPlay icon.



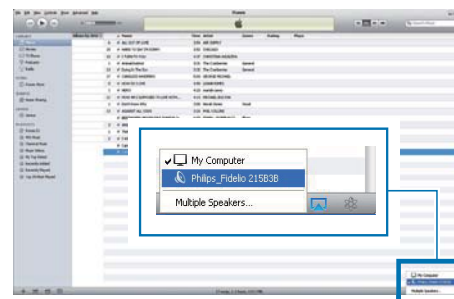
- 3 Select **Philips_Fidelio XXXX** (or user customized name) from the AirPlay list.

Stream from your PC/Mac

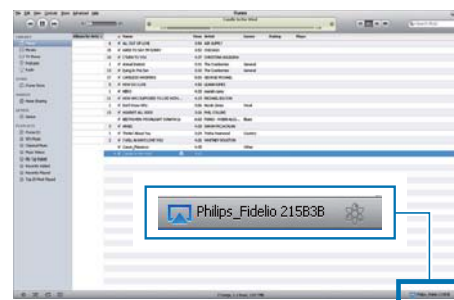
- 1 Launch iTunes 10 (or a later version) on your PC/Mac.
- 2 Click the AirPlay icon on the window.





- 3 Select **Philips_Fidelio_AirPlay XXXX** (or user customized name) from the AirPlay list.



- 4 Select a media file and start play.
↳ After a while, you will hear music from DS6800W.



Tip




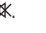


- When you stream audio from your iTunes music library on a PC/Mac, you can select more than one AirPlay-enabled devices (if available) at step 3 to stream music to all of them at the same time.
- If you are using an earlier version of iTunes, the AirPlay icon may be  instead of .

Control play

You can select different play options from either your iTunes host device or DS6800W.

Note

- The operations below are based on the supplied remote control of DS6800W.
- Make sure that you have successfully streamed audio from your iTunes music library to DS6800W.

- To start or pause play, press .
- To skip to the previous or next track, press .
- To adjust volume, press  repeatedly.
- To mute or restore volume, press .
- To switch to the AirPlay audio source, press **AirPlay**.
- To switch the USB audio source (if connected), press .
- To switch to the MP3 link audio source (if connected), press .

Use advanced sound settings

If your iTunes host device is an iPod touch/iPhone/iPad:

For advanced sound settings and additional features, you can use your iPod touch/iPhone/iPad to download the **Philips Fidelio** application from Apple App Store. It is a free application from Philips.

If your iTunes host device is a Wi-Fi enabled PC/Mac:

For advanced sound settings, you can use the equalizer available on iTunes directly (**View -> Show Equalizer**).



Tip

- See the iTunes help documentation for more details.

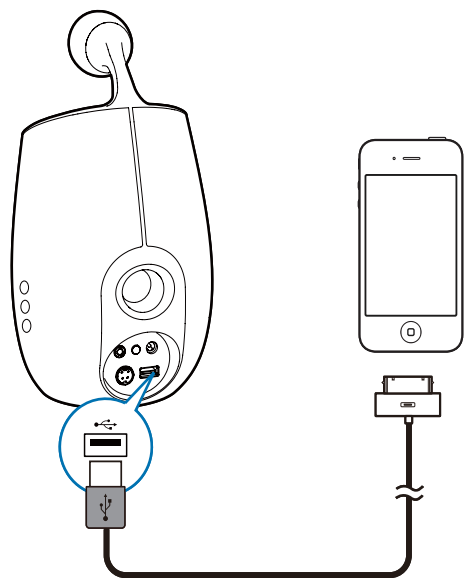
Play/charge your iPod/iPhone/iPad through USB socket



Note

- The USB socket is only compatible with iPod/iPhone/iPad.

You can play or charge your iPod/iPhone/iPad through the USB socket with an Apple USB cable (not supplied).



- 1 Connect an Apple USB cable (not supplied) to:

- the **USB** socket on the back of DS6800W.
- the charging port on your iPod/iPhone/iPad.

- 2 Press to select the USB source.

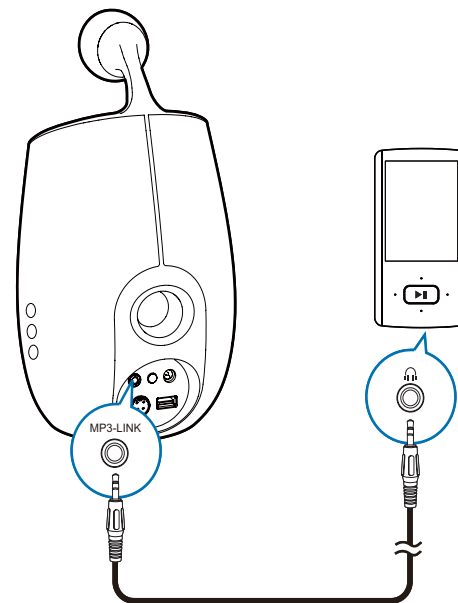
Compatible iPod/iPhone/iPad

The USB socket supports play and charge of the following iPod, iPhone, and iPad models.

- iPad 2
- iPad
- iPhone 4
- iPhone 3GS
- iPhone 3G
- iPhone
- iPod classic
- iPod 5G
- iPod 4G
- iPod nano (2nd, 3rd, 4th, 5th, and 6th generation)
- iPod touch (1st, 2nd, 3rd, and 4th generation)

Play from an external device

You can also listen to an external audio player through DS6800W.



- 1 Connect the supplied MP3 link cable to:
 - the **MP3-LINK** socket on the back of DS6800W.
 - the headphone socket on an external audio player.
- 2 Press to select the MP3 link source.

6 Update firmware

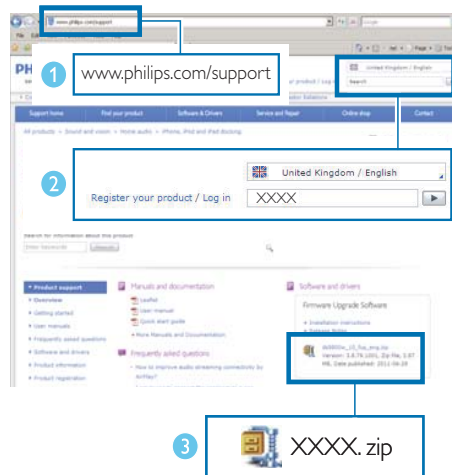
To improve the performance of DS6800W, Philips may offer you new firmware for upgrade of your DS6800W.

Please register your product at www.philips.com/welcome for information about the latest firmware.

Note

- You can only update the firmware from a PC/Mac.

Download the update file



- On your PC/Mac, go to www.philips.com/support.
- Enter the model number to find the latest firmware upgrade file available.
- Save the upgrade file to your hard drive.

Update from the configuration page

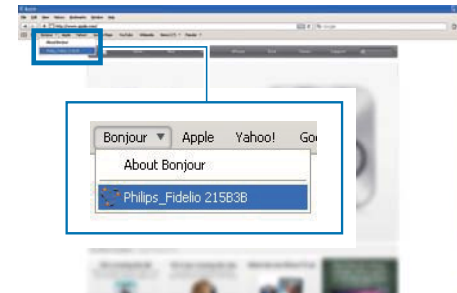
Warning

- Always connect your DS6800W to AC power for firmware upgrade. Never power off your DS6800W during firmware upgrade.

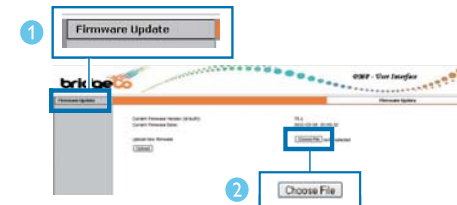
Note

- To use an Internet browser other than Apple Safari on your PC/Mac, remember to go to the Wi-Fi router configuration page and write down the IP address of your DS6800W. See the user manual of your Wi-Fi router for how to find the IP addresses of devices connected to the Wi-Fi router.

- Power on DS6800W (see 'Prepare' on page 11).
 - It takes about 35 seconds for the unit to boot up. During boot-up, the **WI-FI SETUP** indicator on the back of the main speaker blinks green quickly.
 - After boot-up, you can hear a beep and the **WI-FI SETUP** indicator turns to green steadily. DS6800W is connected to the last configured Wi-Fi network automatically.
- Make sure that DS6800W and your PC/Mac are connected to the same Wi-Fi network.
- Open Apple **Safari** on your PC/Mac, then select 'Philips_Fidelio XXXX' from the Bonjour pull-down list.
 - Or open another Internet browser on your PC/Mac, then type in the IP address of DS6800W (available on the Wi-Fi router configuration page) at the address bar.
 - The DS6800W configuration web page is displayed.



- Select the **Firmware Update** tab, then follow the on-screen instruction to enter the next page.



- Click **Choose File** to select the downloaded firmware update file, then click **Open**.



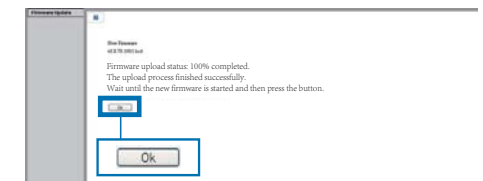
- Click **Upload** to upload the file, then compare the current and new file versions.



- After you make sure that the downloaded update file is the latest, click **Ok** to start firmware update.
 - A progress bar is displayed.



- At completion of the update process, click **Ok** to confirm.



Note

- In case the firmware update fails, you can try the above procedures again.
- After successful firmware update, if there is any problem with the Wi-Fi connection, press and hold both the **+** and **-** buttons on DS6800W for more than 5 seconds at the same time to reset the device, and then try to set up the Wi-Fi network for DS6800W again (see 'Connect to your home Wi-Fi network for AirPlay' on page 13).

7 Product information

Note

- Product information is subject to change without prior notice.

Specifications

Amplifier

Rated Output Power	2 X 25 W RMS
Frequency Response	63 - 1800 Hz
Signal to Noise Ratio	> 90 dB
MP3 Link	650 mV RMS 20 kohm

Speakers

Speaker	Woofers: 8 ohm
Impedance	Tweeter: 8 ohm
Speaker Driver	78 mm woofer + 34 mm tweeter
Sensitivity	Woofers: 83.5 dB/m/W Tweeter: 86 dB/m/W

Wireless

Wireless standard	802.11b/g
Wireless security	WEP (64 or 128 bit), WPA/WPA2 (8-63 characters)
Frequency range	2412 - 2462 MHz (CH1-CH11) (for /79, /37, /55, /97) 2412 - 2472 MHz (CH1-CH13) (for /12, /10, /05)
PBC (one button push)	Yes

General information

AC power	Input: 100 - 240V~, 50/60 Hz 1.2 A Output: 20V === 3.0 A
Operation Power Consumption	50 W
Dimensions - Main Unit (diameter x height)	145 x 162 mm
Weight - With Packing - Main Unit	3.88 kg 1.73 kg

8 Troubleshooting



Warning

- Never remove the casing of this apparatus.

To keep the warranty valid, never try to repair the system yourself.

If you encounter problems when using this apparatus, check the following points before requesting service. If the problem remains unsolved, go to the Philips web site (www.philips.com/welcome). When you contact Philips, ensure that the apparatus is nearby and the model number and serial number are available.

No power

- Make sure that the AC power plug of the device is connected properly.
- Make sure that there is power at the AC outlet.

No sound

- Adjust the volume.
- Check the network connection. Set up the network again if needed (see 'Connect to your home Wi-Fi network for AirPlay' on page 13).
- Check if you have selected the correct audio source.

No response from the unit

- Press and hold both the + and - buttons on DS6800W for more than 5 seconds to reset the device. Then set up the Wi-Fi network for DS6800W again (see 'Connect to your home Wi-Fi network for AirPlay' on page 13).
- Disconnect and reconnect the AC power plug, and then switch on the device again.

Remote control does not work

- Before you press any function button, first select the correct source with the remote control instead of the main unit.

- Reduce the distance between the remote control and the unit.
- Insert the battery with its polarities (+/- signs) aligned as indicated.
- Replace the battery.
- Aim the remote control directly at the IR sensor on the front of the main speaker.

Wi-Fi network connection failed

- Check if your Wi-Fi router is Wi-Fi 802.11b/g certified. This device is only compatible with Wi-Fi 802.11b/g certified routers.
- If your Wi-Fi router is Wi-Fi 802.11n certified, make sure to enable the 802.11b/g mode. DS6800W does not support connection to routers with 802.11n only.
- This device does not support the WPS-PIN method.
- If your Wi-Fi router supports WPS and the WPS-PBC method but fails to connect to DS6800W, try the manual Wi-Fi setup method (see 'Scenario 2: Connect to a non-WPS router' on page 14).
- Enable SSID broadcast on the Wi-Fi router.
- Keep away from potential sources of interference which may affect Wi-Fi signal, such as microwave ovens.
- If you fail to use your PC for Wi-Fi network setup, check whether your PC is using a Wi-Fi network. You cannot use Ethernet connection for AirPlay network setup.
- Make sure that the SSID name of your home router consists of alphanumeric characters, with no space or special characters like %/#/* inserted.
- If you choose to rename the AirPlay device '**Philips_Fidelio XXXX**' in the setting menu, do not use special characters or symbols.
- For some new types of Wi-Fi routers, a network name (SSID) may be created automatically when you use WPS for connection. Always change the default network name (SSID) to a simple one that consists of alphanumeric characters, and

also change the Wi-Fi security mode to secure your network.

- Video streaming or FTP downloads may overload your router and therefore may cause interruptions during AirPlay music play. Try to reduce the load of your router.

Occasional breaking of AirPlay music streaming

Do one or all of the following:

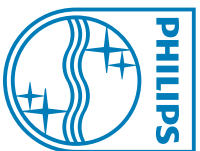
- Move DS6800W closer to your Wi-Fi router.
- Remove any obstacles between DS6800W and your Wi-Fi router.
- Avoid using Wi-Fi channel which is overlapped by the nearby Wi-Fi network.
- Check if your network speed is fast enough (in cases where multiple devices share the same router, the AirPlay performance may be affected). Turn off the other devices connected to your home router.
- Enable the Quality of Service (QoS) option (if available on the Wi-Fi router).
- Turn off other Wi-Fi routers.

No AirPlay icon on my iTunes host device

- Make sure that DS6800W is already connected to your home Wi-Fi network.
- Before you open iTunes, make sure that you have enabled Bonjour service in your PC. Take Windows XP for example: to enable the service, you can click **Start->Control Panel**, and double-click **Administrative Tools-> Services->Bonjour Service**, then click **Start** followed by **OK** on the pop-up menu.
- If the problem remains, try to restart DS6800W.

AirPlay connection failed with Mac or PC

- Temporarily disable the firewall and security software to see whether it blocks the ports that AirPlay uses to stream content. See the help documentation of your firewall and security software on how to unblock the ports used by AirPlay.
- When you use iPod Touch/iPhone/iPad/Mac/PC for AirPlay, if the music play breaks or stops, try to restart your iPod Touch/iPhone/iPad, iTunes or DS6800W.



© 2011 Koninklijke Philips Electronics N.V.
All rights reserved.
Document order number: 000000000000

